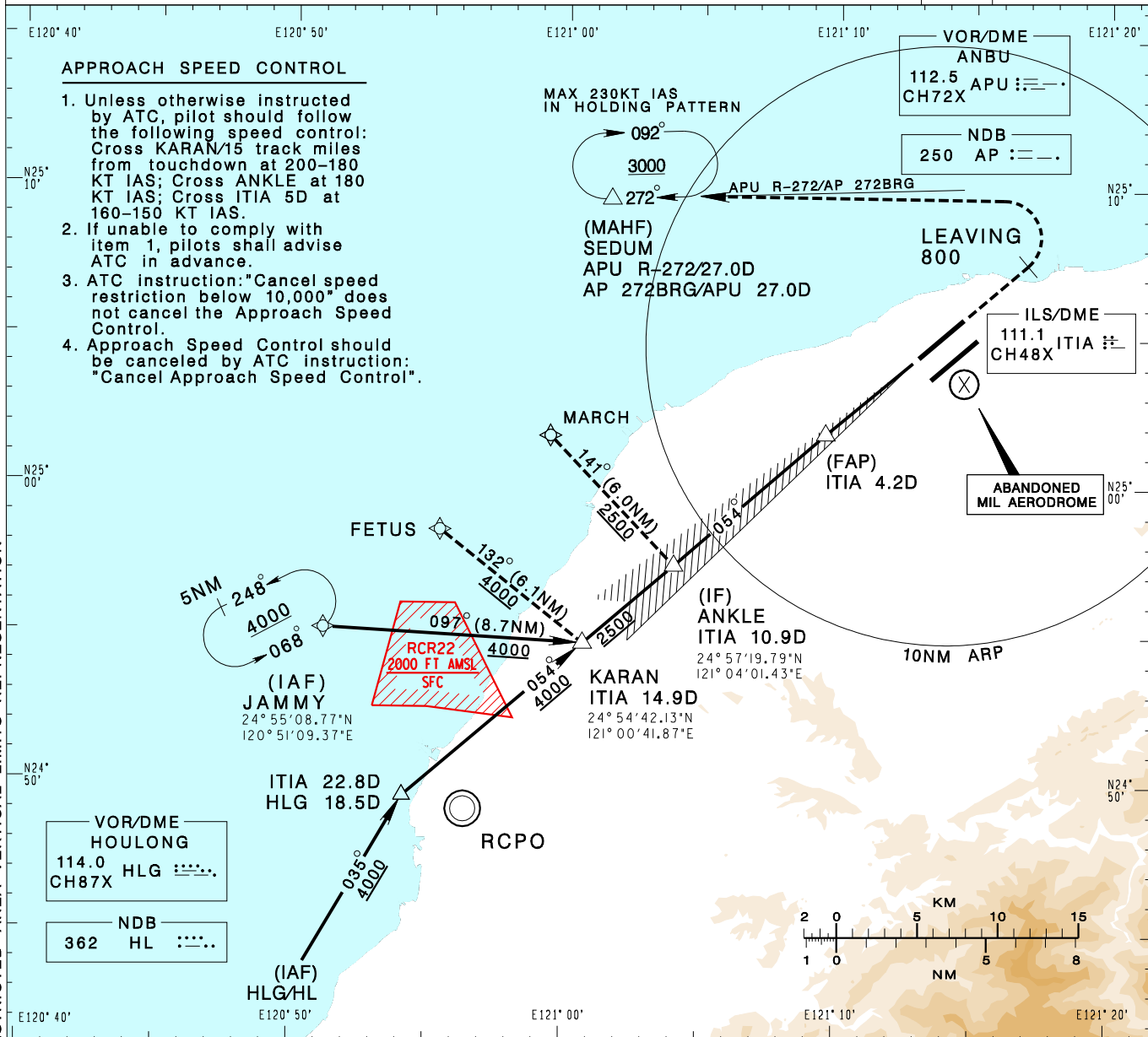


臺灣桃園國際機場
TAIPEI/TAIWAN TAOYUAN INTL AD

RCTP
ILS RWY05L (CAT II)

TAIPEI APP 125.1 128.5 125.6	TAIPEI TWR 118.7 129.3	ATIS 127.6	VAR 5° W 9000' MSA ARP 25NM
Apt Elev: 108'	Rwy05L THR Elev: 74'	Trans Level: FL130	
BEARINGS ARE MAGNETIC; DISTANCES ARE NAUTICAL MILES; ELEVATIONS, HEIGHTS IN FEET			



APPROACH SPEED CONTROL

1. Unless otherwise instructed by ATC, pilot should follow the following speed control: Cross KARAN/15 track miles from touchdown at 200-180 KT IAS; Cross ANKLE at 180 KT IAS; Cross ITIA 5D at 160-150 KT IAS.
2. If unable to comply with item 1, pilots shall advise ATC in advance.
3. ATC instruction: "Cancel speed restriction below 10,000" does not cancel the Approach Speed Control.
4. Approach Speed Control should be canceled by ATC instruction: "Cancel Approach Speed Control".

MAX 230KT IAS IN HOLDING PATTERN

092°
3000
272°
(MAHF) SEDUM
APU R-272/27.0D
AP 272BRG/APU 27.0D

LEAVING 800

ILS/DME ANBU
112.5 APU :— ·— ·—
CH72X
NDB AP :— ·— ·—
250

ILS/DME 111.1 ITIA :— ·— ·—
CH48X

ABANDONED MIL AERODROME

MARCH
141° (6.0NM)
2500

FETUS
132° (6.1NM)
4000

5NM
248°
4000
068°
(IAF) JAMMY
24° 55' 08.77\"/>

097° (8.7NM)
4000
054°
4000
KARAN
ITIA 14.9D
24° 54' 42.13\"/>

(IF) ANKLE
ITIA 10.9D
24° 57' 19.79\"/>

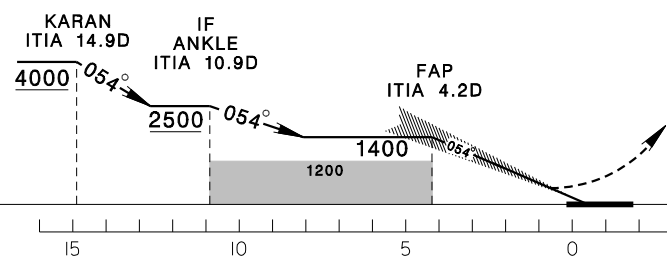
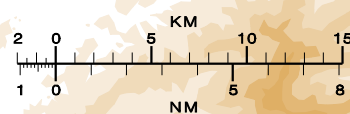
10NM ARP

VOR/DME HOULONG
114.0 HLG :— ·— ·—
CH87X
NDB HL :— ·— ·—
362

ITIA 22.8D
HLG 18.5D

RCPO

(IAF) HLG/HL



MISSED APCH:
CLIMB ON HDG 054 UNTIL LEAVING 800, THEN TURN LEFT DIRECT TO SEDUM, MAINTAIN 3000 AND HOLD.

GP 3.0°
RDH 50

MINIMA (OCA IN FT, VIS IN M, OCH IN FT)				
CATEGORY	A	B	C	D
STRAIGHT IN	174/RVR300 100	174/RVR300 100	174/RVR300 100	181/RVR300 107

NOTE
1. CIRCLING NOT AUTHORIZED.
2. ATS SURVEILLANCE REQUIRED FOR JAMMY TO KARAN AND MISSED APCH SEGMENTS.
*DME REQUIRED.